

# Bundle Inventory

KNOW WHAT YOU'VE GOT. RIGHT NOW.

**aSa's automated barcode system eliminates the time and hassle involved with counting stock and remnants, tracking their location, and managing heat and mill cert information. You'll always know 'what,' 'where,' and 'how much' for every bundle you have on-hand.**

- **Eliminate tedious inventory tracking**

The entire process is automated using barcode scanning technology. To relieve inventory, simply scan the bundle's inventory tag.

- **Planning made easy**

Knowing exactly what material you have on-hand, and where it is in your shop, helps you make quicker, smarter production and material purchasing decisions.

- **Manage heat information**

Enter heat information when material is received. When used in conjunction with Material Tracking, Bundle Inventory automatically associates the heat number to the produced items.

aSa Bundle Inventory tracks on-hand stock and remnant material by combining the portability and convenience of a hand scanner with the power of database-driven information storage. When a mill bundle is opened, simply scan its stock tag for real-time inventory relief. The system also simplifies material receipts, remnant tracking, and book to physical reconciliations. Additionally, flexible reports show you the quantity, location, and value of your on-hand material.

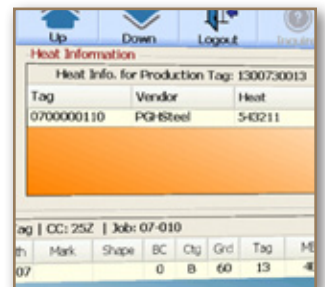
### Integration and Intelligence

Product definitions for rebar, plain round steel, mesh, bar supports, and other accessories are defined once in the system and accessed by all aSa modules, eliminating redundant data entry. Because the system understands the characteristics and units of measure associated with each item, aSa Bundle Inventory can be used to track any item that you supply — not just rebar.

Bundle Inventory works hand in hand with Production and Material Tracking modules to give you all the information you need. For example, Bundle Inventory reports tell you exactly where in the shop to find each bundle of stock and remnant material when it's time to fabricate production items. When aSa Bundle Inventory and Material Tracking are used together, heat information from stock bundles automatically associates to production items fabricated from those bundles.

### Barcode Scanning Technology

Bundle Inventory utilizes industrial grade Wi-Fi hand scanners to communicate with the database live from the shop floor. Because the scanners are wireless, you can take them anywhere inside or outside the shop within 1,000 feet (line of sight) of a receiver. Each aSa-supplied unit has a touch screen, stylus, and number pad for viewing and entering data.



- **Not just for rebar**  
aSa designed Bundle Inventory to be flexible enough to track any material that you supply, including mesh and other accessories.

- **Track remnant as well as stock material**  
When usable residual steel is created during fabrication, simply print remnant tags to track the quantity and location of your remnants.

- **Easy reconciliations**  
Book to physical procedures are as simple as scanning your on-hand inventory tags and validating the quantity displayed on the scanner.

- **Scan and store mill certs**  
Mill certs — in any electronic file format — can be attached to heat information within aSa software when material is received.



## Receipts

With aSa, recording receipts is as easy as selecting the item from a on-screen list and entering a few basic pieces of information. For rebar and plain rounds, you can enter heat information and even attach a scanned mill certificate. Once the receipt is recorded, simply click the Print button to generate barcoded stock bundle inventory tags. You can also print tags and track inventory for bundles of remnant steel.

## Inventory Relief

When you open a stock or remnant bundle to fabricate items, you'll scan its inventory tag. The system prompts you to enter the remaining quantity, which it saves to the database as the new on-hand inventory value. If the next scan is a Material Tracking scan of a production item tag, the system automatically associates the heat number from the opened stock bundle to the produced item.

## Physical Reconciliation

Physical counts with pen and paper are a thing of the past with aSa Bundle Inventory. Simply set the scanner to Physical mode and begin scanning inventory tags. After each scan, the system displays the database-stored quantity for that item. If the quantity is correct based on your physical count, simply scan the next tag. If not, use the scanner's stylus or keypad to enter the on-hand quantity and immediately update the database.

## Helpful Reports

A variety of report options let you know what stock and remnant material you have used, what material you have on-hand, and the value of that material. Flexible options allow you to sort and filter report data based on a date range, heat number, or other criteria.

*Scan barcoded inventory bundle tags with Wi-Fi hand scanners. When you scan a barcode, information is instantaneously sent to the database for real-time inventory tracking. The system features a Relief Mode that automatically updates the on-hand quantity for opened bundles, and a Physical Mode to easily reconcile shop counts with stored database values.*

**Applied Systems Associates, Inc.**  
[www.asarebar.com](http://www.asarebar.com)

5270 Logan Ferry Road  
Murrysville, PA 15668 USA  
1.800.CALL.ASA 1.800.225.5272  
+1.724.733.8700

**aSa Australia**  
+61.7.3018.7564

**aSa Latin America**  
+1.787.533.8484

**aSa Middle East**  
+971.4.3756980