



# CAD/Detailing

Quicker turn-around, better drawings,  
fewer mistakes.



Design. Fabricate. Build.

# About CAD/Detailing

aSa CAD/Detailing gives you the competitive advantage. Detailing is simple, fast, and error-free; drawings are clear and placer-friendly; reports show up-to-the-minute job progress; and material is tracked through the shop and field via aSa's integrated software products.

Built to exceed the needs of detailers, fabricators, placers, and engineers, aSa CAD/Detailing combines the engineering design tools of Bentley ProStructures with aSa-developed applications for detailing and managing rebar information.



## Helping you work smarter

### Smart detailing

- ✓ Save hours of detailing time with tools to automate reinforcing for common structures, including: columns, beams, linear areas, circular areas, radial steel, tie configurations, and more.
  1. You provide minimal information such as clearances, bar spacings, and lapping conditions.
  2. At the click of the mouse, the program instantly develops and places bars required for the structure.
  3. Place the associated callouts or schedule; both are very customizable based on your preferences.
- ✓ Take advantage of built-in intelligence; the system understands and distinguishes concrete, rebar, callouts, miscellaneous products, and taken-off material.

### Integration

- ✓ Takeoff data from CAD is automatically accessible to downstream applications for reporting, scheduling, tag generation, and shipping.
- ✓ Check the real-time fabrication and shipping status of any callout on your drawing.
- ✓ Compare estimated, detailed, shipped, and billed weights for all of your projects.

### Intelligent takeoff

- ✓ Easily select bars to take off:
  - draw a box around the desired area
  - click to select specific callouts
  - select based on plan, section, or numerous other filters
- ✓ The program automatically builds an order of all rebar, mesh, and miscellaneous items contained in your selection.
- ✓ Taken-off items change color for easy identification on the drawing. They are also restricted from future accidental takeoff.

**aSa.CAD Vault** - *Powerful add-on tool for organizing aSa AND third-party drawings and models.*

- ✓ Collaborate effortlessly across your enterprise: check in, check out, and request access to drawings shared by multiple users.
- ✓ Track revision history and roll back to a previous version if needed.
- ✓ Save all your aSa, ADDA, AllPlan, RebarCAD, Revit, and Tekla project files to the cloud directly from the aSa Project Manager interface. Vault data is secure and automatically backed up.

# Experience these key benefits



## Set up projects in seconds

View and open all of your jobs, 2D drawings, and 3D models from a single powerful interface. Open and manage AutoCAD® and other file formats.



## Reduce shortages & errors

Built-in calculations and error-checking help prevent mistakes. The system tracks each item, so you always know what is taken off and what remains.



## Manage drawings with aSa CAD Vault

Securely store all your drawings and models (even third-party files!) in the cloud. Track revision history and collaborate with other users.



## Accommodate fabricating and placing needs

Tag messages, special material groupings, and placer-specific reports allow you to help shop and field crews work more efficiently.



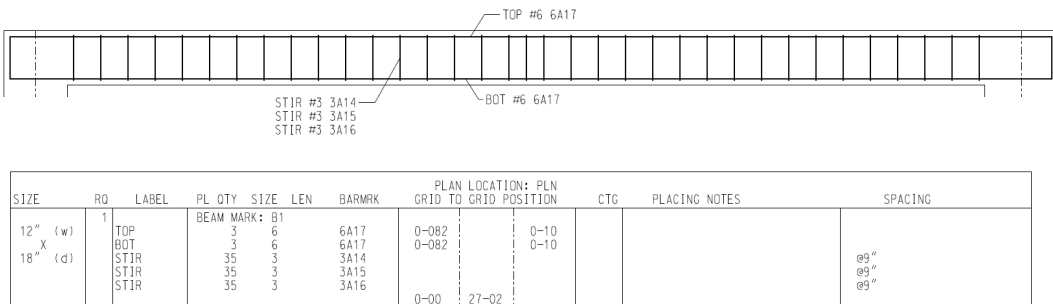
## Eliminate tedious drawing tasks

Beam, Column, Linear Area, and many other detailing tools are built into the system. You enter the basics such as clearances and laps, and the program handles all the drawing and detailing.



## Never lose track of your material

aSa records and reports detailed and taken-off weights per area, drawing, project, and detailer. Downstream reports compare detailed to estimated, shipped, and billed weight values.



Current Default: 2D-PGH xRef: B1 lbs 372

Plan: PLN Beam Mark: B1 Include Tie Spacing? Leader Type: Plain

Width: 1-00 Depth: 1-06

Left Support: 1-09 Right Support: 2-00

Left X-Dist: 0-102 Right X-Dist: 1-00

Clear Span: 25-032 Grid To Grid: 27-02

Type	Loca	Qty	Size	Length	Hook Type	Hook Length	Round	Left Macro	Right Macro	Remarks
TP							N			
1	TOP	3	6	2	30-08	6A17	S	60	None	138
2	BOT	3	6	2	30-08	6A17	S	60	None	138
3	STIR	35	3	S3	3-11	3A14	S	60	None	52
4	STIR	35	3	T9	1-05	3A15	S	60	None	19
5	STIR	35	3	T9	1-11	3A16	S	60	None	25

Powerful detailing tools like aSa Beam (left), Linear, Circular Area, Slab, and others automate bar development, eliminating the need to manually draw bars and type each item's callout.

Other tools include:

Cross Reference - place a single label (such as B-1) that references any schedule or group of callouts, then repeat the details by simply copying the label to different locations on the drawing.

Catalog Librarian - save and re-use details on multiple drawings.

Shape Manager - create your own custom bend shapes.

Tie Manager - create and store complex tie configurations.



# aSa.Studio

cloud software suite

## About aSa

---

aSa is a world-leading provider of software for reinforcing steel, construction, and precast industries. We have been developing innovative solutions and providing personal service to our customers since our very first product was developed in 1969.

## Contact Us

---



1.800.225.5272  
+1.724.733.8700



5270 Logan Ferry Road  
Murrysville, PA USA



[info@asaHQ.com](mailto:info@asaHQ.com)



[asaHQ.com](http://asaHQ.com)



Visit [asaHQ.com/Contact-Us](http://asaHQ.com/Contact-Us)  
to view all of our worldwide locations



Design. Fabricate. Build.