



You're Invited!

World of Concrete Booth N3136

Experience aSa.Studio
Cloud Rebar Software



January 20-22, 2026
Las Vegas Convention Center

INSIDE! REBAR VENDOR SHOWCASE | EXHIBITION MAP →



Design. Fabricate. Build.

Contents

aSa Rebar Software3

Contractors Materials Company4

CRS5

CRSI6

HRC.....7

aSa Mobile Signature App.....8

Mar-Mac.....9

MEP / KRB 10

nVent Lenton 11

Pedax..... 12

Schilt / RMS..... 13

Schnell..... 14

aSa Opto-Shear Console..... 15

WOC Floorplan 16

Save the Date ...



**THE
PRECAST
SHOW®**

February 4-6, 2026 | Kansas City | Booth 511



Copyright © 2026 Applied Systems Associates, Inc. All rights reserved.

aSa is a registered trademark and service mark of Applied Systems Associates, Inc. All other product names and company names are the property and/or trademarks of their respective owners.

WORLD OF CONCRETE BOOTH N3136



SEE OUR FULL SUITE OF REBAR APPLICATIONS IN ACTION!



aSa.Studio

- Estimating
- Order Entry
- Scheduling
- Processing
- Inventory Tracking
- Production Tracking
- Load Tracking
- Shipping Ticket
- Field Placing



CAD Solutions

- 3D ProRebar
- 2D CAD/Detailing
- Pro Plug-Ins
connect third-party CAD tools to your
aSa.Studio database
- CAD Vault
cloud storage & collaboration for CAD
drawings & models (aSa and third-party)



Studio Financials

- Inventory Management
- Contract Management
- Shipping Ticket
- Invoice
- Cash Receipts
- Accounts Payable (in development)
- General Ledger (in development)
- Cash Management (in development)



More!

- Hardware & Cloud Solutions
- Opto-Shear Console
- Go Rebar
- iRebar
- APIs
- Rebar Tags & Printers

aSaHQ.com



**BUILD ONCE.
BUILD RIGHT.
BUILD STAINLESS.**



WWW.CMCMMI.COM

513-733-3000



**Contractors
Materials
Company**

**Proudly Servicing Our
Customers Since 1907**

World of Concrete Booth N3101

QUALITY REBAR EQUIPMENT BUILT TOUGH IN NORTH AMERICA



BENDERS



SHEAR LINE



SPIRAL RING & RADIUS



SHEAR



MATERIAL HANDLING



BENDER PRO CONTROLLER

CRS Specialties Inc. is a North American manufacturer of high quality, heavy duty rebar fabrication equipment with over 50 years of experience servicing the rebar industry. The CRS team of in-house, professional technicians are available for installations, training & troubleshooting, and we also house the most comprehensive parts warehouse in the industry, with overnight delivery. CRS Specialties in-house engineering, and complete custom fabrication facilities, guarantees your equipment will be delivered on time, and on budget!

MEP®
North American Service Agents

CRS Specialties Inc. - A proud North American representative for MEP SPA Equipment, Parts & Service



CRS Specialties Inc.
72 Clark Street, Welland, ON L3B 5W6
info@crsspecialties.com
www.crsspecialties.com

Visit Us at Booth N2954

CRSI Membership *Delivers* Powerful Resources *for* Rebar Detailers *and* Fabricators

- Online Rebar Detailer Training Program*
- Exclusive Market Data and Analysis
- Discounts on Publications and Field Guides
- Priority Access to CRSI's Technical Experts
- Networking Opportunities at National, Regional, and Chapter Meetings
- Safety Resources

**Free for Fabricator members and fee-based for remaining Industry and select Associate member categories.*



**Download
the free
REBAR
REFERENCE
mobile app!**

CRSI Concrete Reinforcing
Steel Institute

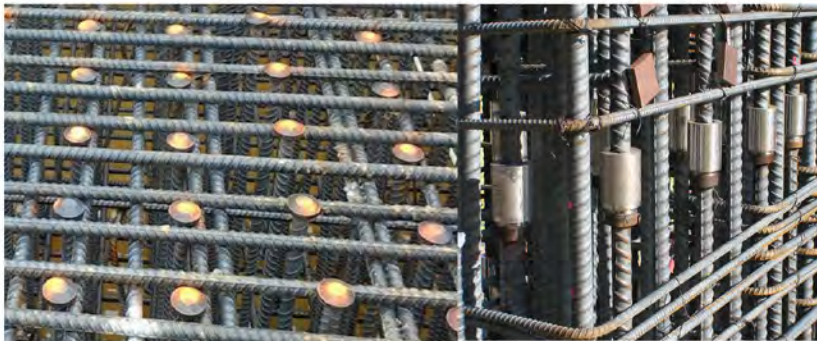
Learn more about our unique
member benefits at www.crsi.org

World of Concrete Booth N2827



High-Performance Reinforcement Products

Headed Reinforcement Corporation is a manufacturer of high-performance reinforcement products for structural integrity and constructability and has been providing headed reinforcing bars since 1985! HRC's high-performance T-Headed Bars, Mechanical Splices and other related products are consistently specified for use on projects with the most demanding applications such as seismic, impact and blast resistant loading conditions. The Ultimate Performance of HRC products should be a standard requirement in your design and you can rely on them to provide you with advantages in structural performance, installation savings and benefits in construction progress and economy.



**Contact us today to learn more about our
product solutions!**

World of Concrete Booth N2800

Development and Anchorage of Reinforcing Bars

Mechanical Splicing of Reinforcing Bars

**HRC Performance
Local Quality Fabrication**



Made in the USA

Headed Reinforcement Corp.

(800) HRC-6775

(714) 557-1455

Sales@hrc-usa.com

www.hrc-usa.com



SCAN TO SIGN

FOR YOUR REBAR DELIVERIES



The mobile signature app is included with aSa.Studio's **Shipping Ticket** module.

For each delivery ...

- Record customer signature & GPS coordinates for the drop-off
- Add jobsite photos to the shipping record
- Track trailers, pallets, or any other returnable items left at the site
- Send instant notification of the delivery to key personnel

**SCAN HERE TO
SEE HOW IT
WORKS***



**Our sample shipping ticket resets every 2 minutes. If you get an "already delivered" message, simply wait a couple minutes, then try scanning again.*

CONTRACTOR

Concrete Construction Products

VALUE AT ITS FINEST.

MAR-MAG PREMIUM

MAR-MAG PREMIUM

**16 GA SOFT BLACK
ANNEALED
TIE WIRE**
12 COILS PER BOX
Free! Not Bound! 2004-2005
Standard 1/4" x 1/4" x 1/4"
HWA, HWC Industries, Inc. • HWA 100 • 800-561-5881



QUALITY AT ITS BEST.

NOW OFFERING PREMIUM SLAB BOLSTERS & UPPERS

For a complete product lineup
visit us below:

www.marmacinc.com

1-800-541-2461



**WORLD OF
CONCRETE®**

JANUARY 20-22, 2026

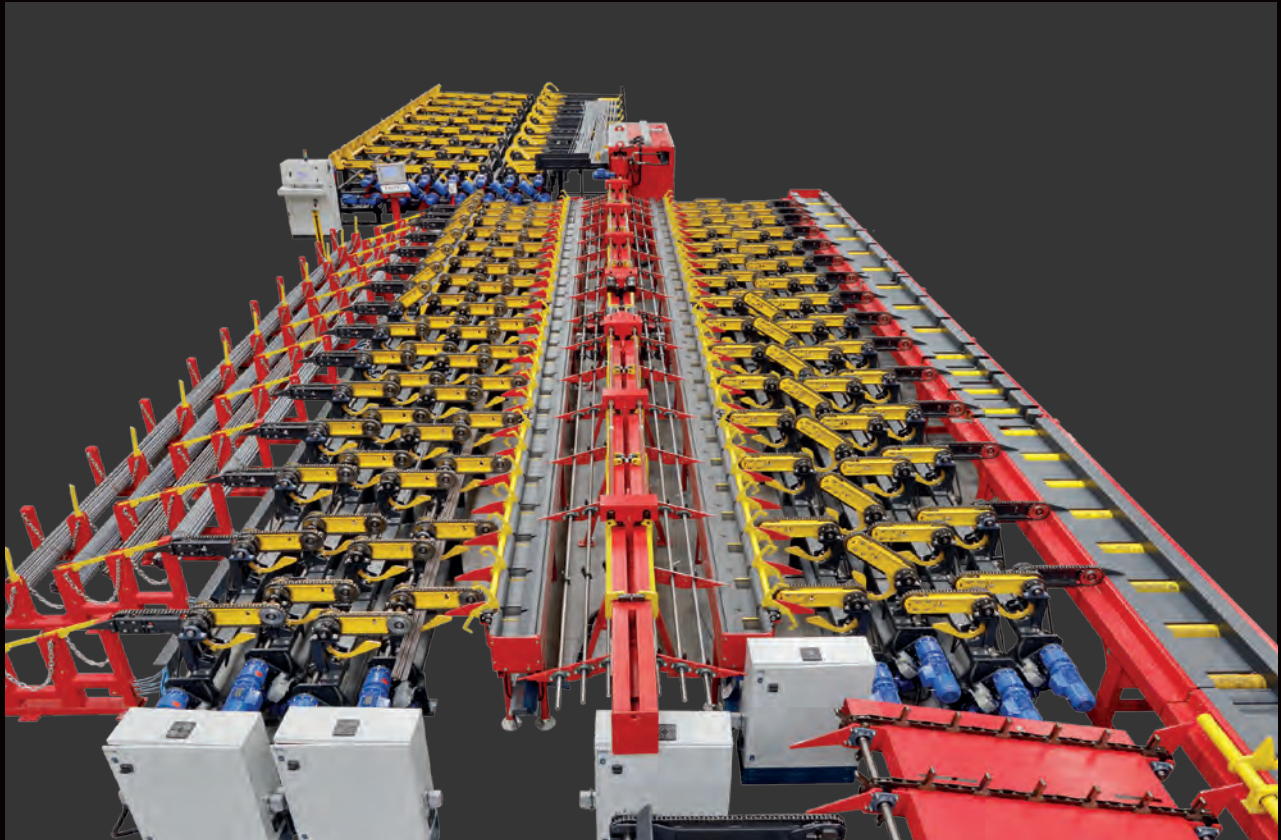
BOOTH N2957

MEP

A tradition of innovation

A PARTNER
FOR ALL
YOUR NEEDS

NEW FULLY AUTOMATIC REBAR PROCESSING SYSTEM



Come and visit us at **MEP** booth **N2805** and **KRB** booth **N3104**
at PAV. NORTH HALL CONCRETE REINFORCEMENT
January 20-22, 2026 - Las Vegas Convention Center - USA

MEP S.p.a.
Via Leonardo Da Vinci, 20 - Reana del Rojale (UD) - ITALY
Phone +39 0432 851455
mep@mepgroup.com

MEP NORTH AMERICA
2512 Summit Avenue, Suite 307 - Plano, TX 75074 - USA
Ph: 469-367-0458; 469-367-0253
mepnorthamerica@mepgroup.com

www.mepgroup.com



nVent LENTON Swaged Terminator



Built for **bandwidth**. Designed for **flexibility**.
Engineered for the **next generation** of codes.

Designed to meet the requirements of:
ACI® 318 | ASTM A615/A706 grades 60 and 80



PRODUCT BENEFITS

- Utilizes high-speed cold forging technology to attach the terminator
- Available in two size ranges: The DT14 head area exceeds 10x bar area (net 9x) and the DT16 head area exceeds 5x bar area (net 4x)
- Allows for the inherent variability of rebar while maintaining the highest level of performance

EQUIPMENT FEATURES

- Integrated safety controls
- The High Output Equipment Option is available for rebar Sizes #4-#7
- Machine cycle time 20–25% faster than similar systems
- Quick connect hydraulic and electrical fittings
- Pneumatic bar stop eliminates need for manual adjustments

©2025 nVent. All nVent marks and logos are owned or licensed by nVent Services GmbH or its affiliates. All other trademarks are the property of their respective owners. nVent reserves the right to change specifications without notice.
LENTON-FLY-N1705950-ASA2026-USEN-2512

nVent.com/LENTON



Please visit us at:
North Hall / N3348



TWINMASTER

For those who focus on
HIGH PERFORMANCE
and **FLEXIBILITY**



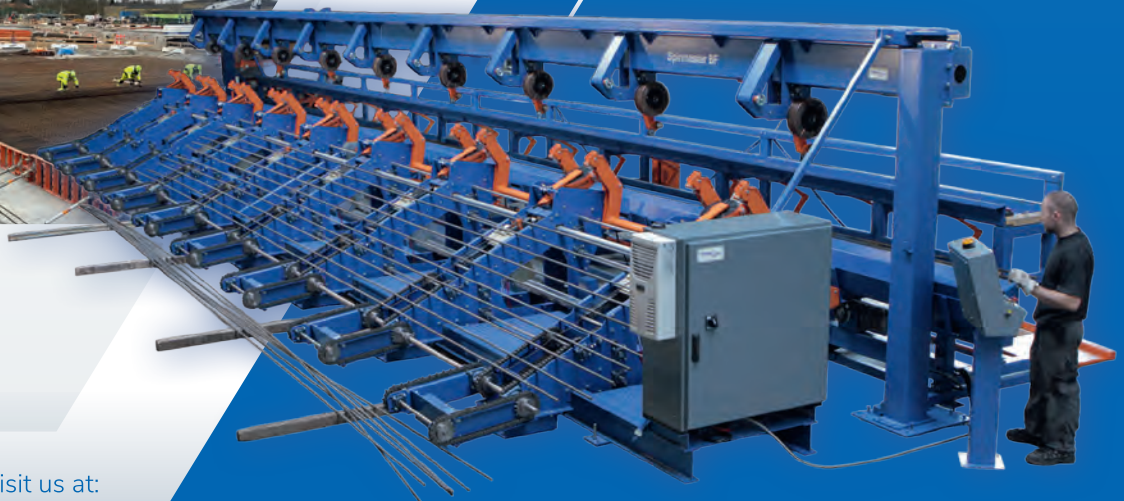
January 20-22, 2026

www.pedax.com



SPINMASTER 

The **REVOLUTIONARY SYSTEM**
for producing **NON-WELDED**
REBAR ROLL MATS



Please visit us at:
North Hall / N3350

www.steelmasterengineering.com

Automate Your Rebar Shop



Multibar 500 shearlines with Automatic Bar Loaders (ABL)

- Shearline with unique integrated ABL module for automatic selecting, counting, and loading of new bars.
- RMS offers various modifications for the shearline adding value to the machines through safety and production reprofits.
- High cutting performance even with smaller diameters due to high roller conveyor speed and high cutting speed.
- Optional security enclosures are available to keep unwanted personnel from accessing the controller and information contained on it.



Consolidator

- Automated warehouse system for buffering and assembling produced bars/bundles.
- Increased production through continuous and automatic discharge and movement of produced bars/ bundles.
- Better overview of bundles produced on the shop floor, with real-time information about where bundles are and what positions they consist of.

Contact us for more information

Schilt Engineering North America

📍 5935 Emerald Ave
Las Vegas, NV 89122
☎️ +(1) 702 454 8688
🌐 www.rebarmachineservice.com

Schilt Engineering The Netherlands

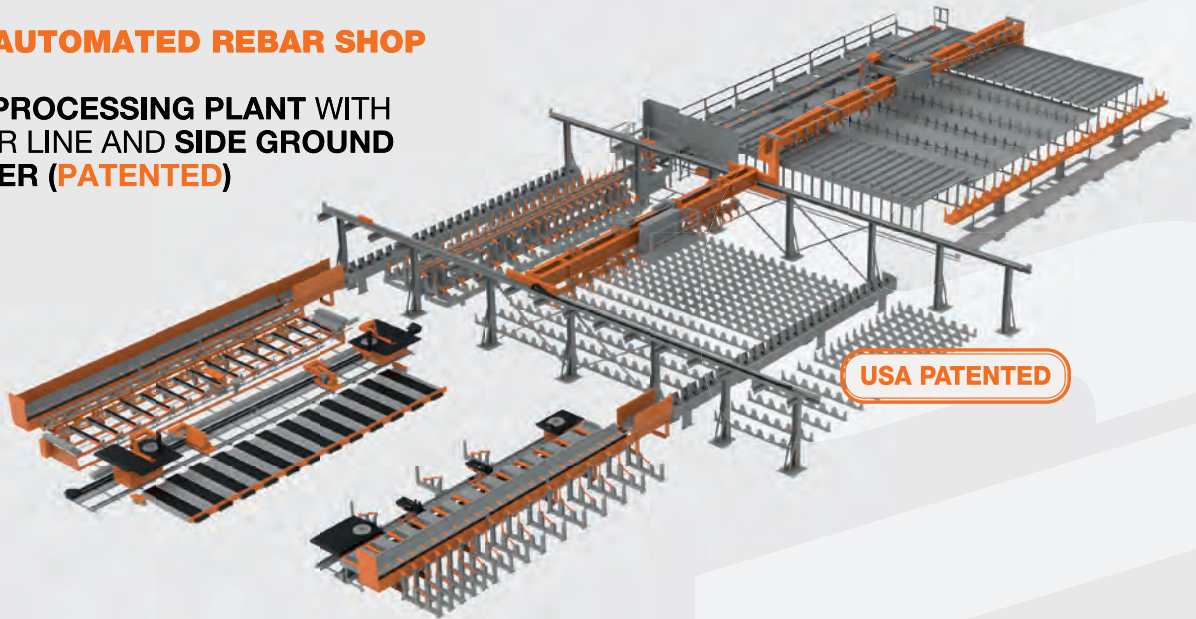
📍 De Diamant 12
NL-2872 ZZ Schoonhoven
☎️ +31 (0)182 - 38 82 29
✉️ sales@schiltbv.nl
🌐 www.schiltbv.nl
📱 Follow us on LinkedIn

**Come and visit us at the
World of Concrete Convention
in Las Vegas, NV**
Booth N - 2714

We look forward to seeing you

THE AUTOMATED REBAR SHOP

**BAR PROCESSING PLANT WITH
SHEAR LINE AND SIDE GROUND
BUFFER (PATENTED)**



1uno
UNMANNED OPERATION PROGRAM

ROBOMASTER 60 UN.O.

Robomaster 60 UN.O. is the **first fully automatic unmanned robotic shaping centre** for the production of shapes and big stirrups.



SCHNELL NORTH AMERICA

4935 Newport Street
Commerce City, CO 80022
ph: 303-371-3799
toll free number 1-866-4SCHNELL
support@schnellus.com

OPERA 16

Multipurpose stirrup bender and bar-shaping machine off-coil, equipped with a disk-bending system specifically designed for the fabrication of either stirrups and shaped bars with double-end bends, capability up to #5



OPTO-SHEAR

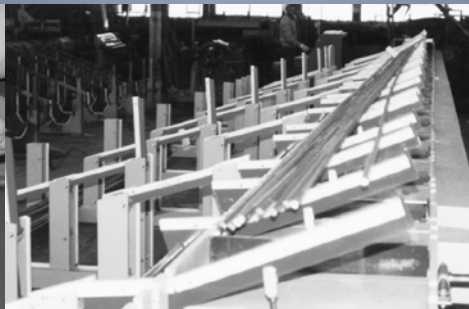


Get more
from your
shearline.
Get more
from your crew.

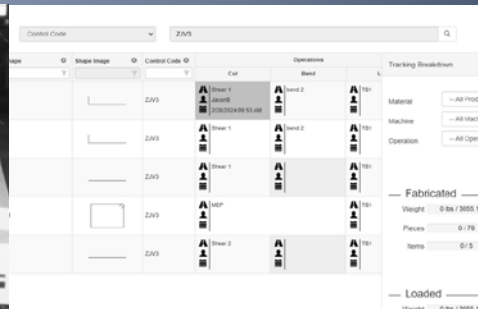
Find out how much better
your shop can be!



• Scan or auto-load tags



• Automate cutting & discharge



• Track fabrication & heat info

The aSa Opto-Shear interfaces with nearly any
shearline as an original or replacement controller.

The aSa console manages and paces your entire
shop operation, resulting in fewer errors, less scrap,
and more efficiency from your equipment and crew.



WATCH THE VIDEO

+1.724.733.8700 | 1.800.225.5272

info@asaHQ.com

www.asaHQ.com



World of Concrete Booth N3136

North Hall

WOC GENERAL

CONCRETE REINFORCEMENT

ENTRANCE

PEDAX
N3348

PROGRESS
N3155

EUROBEND
N3154

MAR-MAG
N2957

CRS
N2954

mateenbar
N2950

**group
schnell**
REINFORCEMENT PROCESSING SOLUTIONS
N2936

BarSplice
PRODUCTS, INC.
A DIVISION OF FC INDUSTRIES, LLC
N2927

CRSI
N2827

GFI
N2726

R.M.S.
Schilt Engineering
N2714

MST BAR
N2505

EVG
N1219

npca
National Precast Concrete Association
N747

aSa
Booth N3136

nvent
LENTON
N3337

CMC
N3229

SALIT SPECIALTY REBAR
N3316

KRB
BUILT TO LAST
N3104

CMC
N3101

HRC
N2800

MEP
N2805

