



CAD/Detailing

Quicker turn-around, better drawings,
fewer mistakes.



Design. Fabricate. Build.

About CAD/Detailing

aSa CAD/Detailing gives you the competitive advantage. Detailing is simple, fast, and error-free; drawings are clear and placer-friendly; reports show up-to-the-minute job progress; and material is tracked through the shop and field via aSa's integrated software products.

Built to exceed the needs of detailers, fabricators, placers, and engineers, aSa CAD/Detailing combines the engineering design tools of Bentley ProStructures with aSa-developed applications for detailing and managing rebar information.



Helping you work smarter

Powerful drafting

- ✓ Streamline the drawing process. AccuDraw allows you to precisely control the position and orientation of any object.
- ✓ Keep your work organized. Each of the drawing's layers has built-in intelligence; the system understands and distinguishes concrete, rebar, callouts, miscellaneous products, and taken-off material.
- ✓ Open, modify, and output native AutoCAD files from within ProStructures.

Smart detailing

- ✓ Save hours of detailing time with tools to automate reinforcing for common structures, including: columns, beams, linear areas, circular areas, radial steel, tie configurations, and more.
 1. You provide minimal information such as clearances, bar spacings, and lapping conditions.
 2. At the click of the mouse, the program instantly develops and places bars required for the structure.
 3. Place the associated callouts or schedule; both are very customizable based on your preferences.

Intelligent takeoff

- ✓ Easily select bars to take off:
 - draw a box around the desired area
 - click to select specific callouts
 - select based on plan, section, or numerous other filters
- ✓ The program automatically builds an order of all rebar, mesh, and miscellaneous items contained in your selection.
- ✓ Taken-off items change color for easy identification on the drawing. They are also restricted from future accidental takeoff.

Integration

- ✓ Takeoff data from CAD is automatically accessible to downstream applications for reporting, scheduling, tag generation, and shipping.
- ✓ Check the real-time fabrication and shipping status of any callout on your drawing.
- ✓ Compare estimated, detailed, shipped, and billed weights for all of your projects.

Experience these key benefits



Set up projects in seconds

View and open all of your jobs, 2D drawings, and 3D models from a single powerful interface. Open and manage AutoCAD® and other file formats.



Decrease turn-around time

aSa software automates every step of the detailing process, from initial project setup to easy material takeoff directly from the drawing.



Eliminate tedious drawing tasks

Beam, Column, Linear Area, and many other detailing tools are built into the system. You enter the basics such as clearances and laps, and the program handles all the drawing and detailing.



Reduce shortages & errors

Built-in calculations and error-checking help prevent mistakes. The system tracks each item, so you always know what is taken off and what remains.



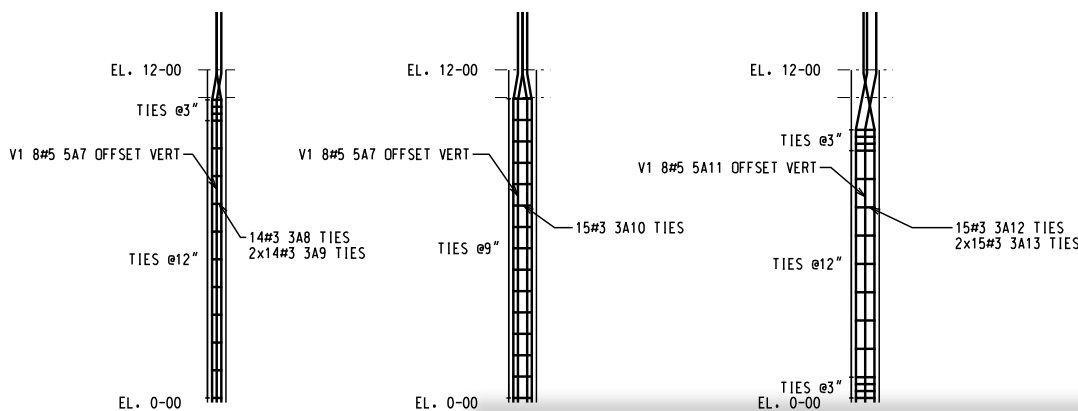
Accommodate fabricating and placing needs

Tag messages, special material groupings, and placer-specific reports allow you to help shop and field crews work more efficiently.

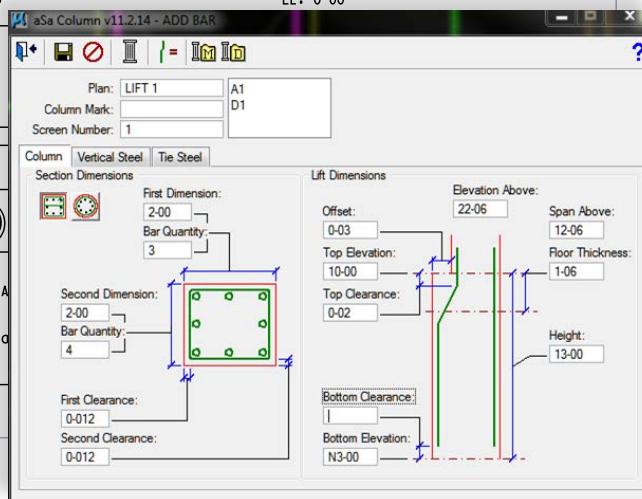


Never lose track of your material

aSa records and reports detailed and taken-off weights per area, drawing, project, and detailer. Downstream reports compare detailed to estimated, shipped, and billed weight values.



Column Marks	A1 A3 B1 C1 D1 D3	A2 A4 B4 C4 D2 D4	B2
Total Req	12		1
Lap Plan/Elev	25" 12-00		25" 12-00
Pattern			
Verticals Ties	V1 8#5 5A7 OFFSET VERT 14#3 3A8 TIES 2x14#3 3A9 TIES		V1 8#5 5A7 OFFSET VERT 15#3 3A10 TIES
Tie Spec. Size	11@12", 3@3" 8" x 8"		15@9" 12" dia
Height Plan/Elev	12-00 LIFT 1 0-00		12-00 LIFT 1



Powerful detailing tools like aSa Column (left), Beam, Linear, Circular Area, Slab, and others automate bar development, eliminating the need to manually draw bars and type each item's callout.

Other tools include:

Cross Reference - place a single label (such as B-1) that references any schedule or group of callouts, then repeat the details by simply copying the label to different locations on the drawing.

Catalog Librarian - save and re-use details on multiple drawings.

Shape Manager - create your own custom bend shapes.

Tie Manager - create and store complex tie configurations.



aSa.Studio

cloud software suite

About aSa

aSa is a world-leading provider of software for reinforcing steel, construction, and precast industries. We have been developing innovative solutions and providing personal service to our customers since our very first product was developed in 1969.

Contact Us



1.800.225.5272
+1.724.733.8700



5270 Logan Ferry Road
Murrysville, PA USA



info@asaHQ.com



asaHQ.com



Visit asaHQ.com/Contact-Us
to view all of our worldwide locations



Design. Fabricate. Build.