



ProRebar

The next generation of rebar detailing.

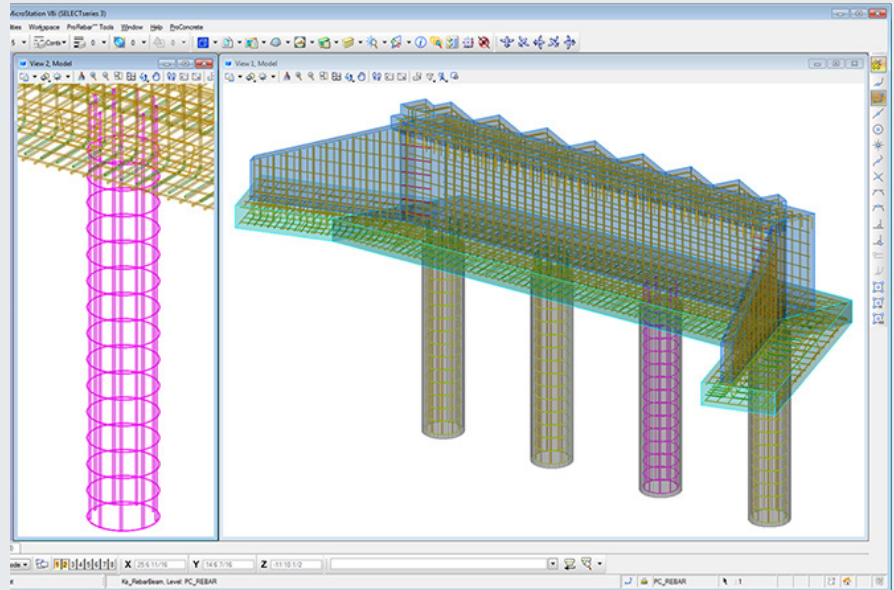


Design. Fabricate. Build.

About ProRebar

ProRebar® is an advanced 3D CAD software tool used to model, detail, and schedule reinforced concrete structures. In addition to improving project turn-around time, the system allows concrete and rebar to be fully realized components of each project's vision via Building Information Modeling (BIM).

The ProRebar package combines Bentley ProConcrete™, a powerful 3D modeling engine, with special aSa tools designed for rebar fabricators and placing firms. Quickly and accurately model all components of your structure, including concrete, rebar, mesh, connectors, and other accessories



Helping you work smarter

Collaborate and everyone wins

- ✓ Share model data with other 3D tools, including Revit®, STAAD®, and RAM®.
- ✓ See a realistic view of the concrete and rebar relative to other construction elements, such as HVAC, structural steel, and masonry.
- ✓ Visually detect congestion issues long before they become a problem at the jobsite.
- ✓ Rebar detailers, engineers, and other stakeholders can easily review designs without complicated import and export processes. Options include:
 - Bentley ProjectWise® Navigator - perform clash detections and time schedule simulations.
 - 3D PDF - display objects in different modes (such as wireframe, shaded, and hidden); switch layers / levels on and off; rotate; zoom; and perform walk-throughs ... all using the free Acrobat® Reader.
- ✓ Create composite models for concrete and structural steel projects; the ProStructures graphics engine handles both disciplines.

Rely on intelligent detailing tools

- ✓ Work with any building code or unit of measure required for your projects.
- ✓ Detailing tools automate modeling concrete and rebar for footings, slabs, walls, beams, columns, and other common structure types.
- ✓ When you change concrete dimensions, all associated reinforcing automatically updates.
- ✓ From a single ProRebar model, you can automatically generate 2D rebar placing drawings, bar bending schedules, and parts lists. Changes to the 3D model update all related drawings and documents.

Connect your entire operation

- ✓ Takeoffs from ProRebar are instantly available for scheduling, tagging, and equipment automation.
- ✓ See heat information and production status right from the model.
- ✓ Connect to aSa iRebar for two-way communication between the model and jobsite.

Experience these key benefits



Eliminate tedious drawing tasks

Built-in tools and templates allow you to model concrete and rebar quickly and accurately. Even complex shapes can be easily reinforced without the need to draw individual bars.



Connect to downstream operations

ProRebar has unparalleled connections to aSa's suite of rebar applications. Right from the model, you can see key information, such as fabricating status and heat data for any bar.



Easily detect congestion problems

View modeled concrete and rebar from any angle or distance to find and correct congestion problems or design flaws before they become issues at the jobsite.



Customize your work environment

A flexible framework allows ProRebar to handle any building code, measurement units, rebar shape, or environment settings you need for your projects.



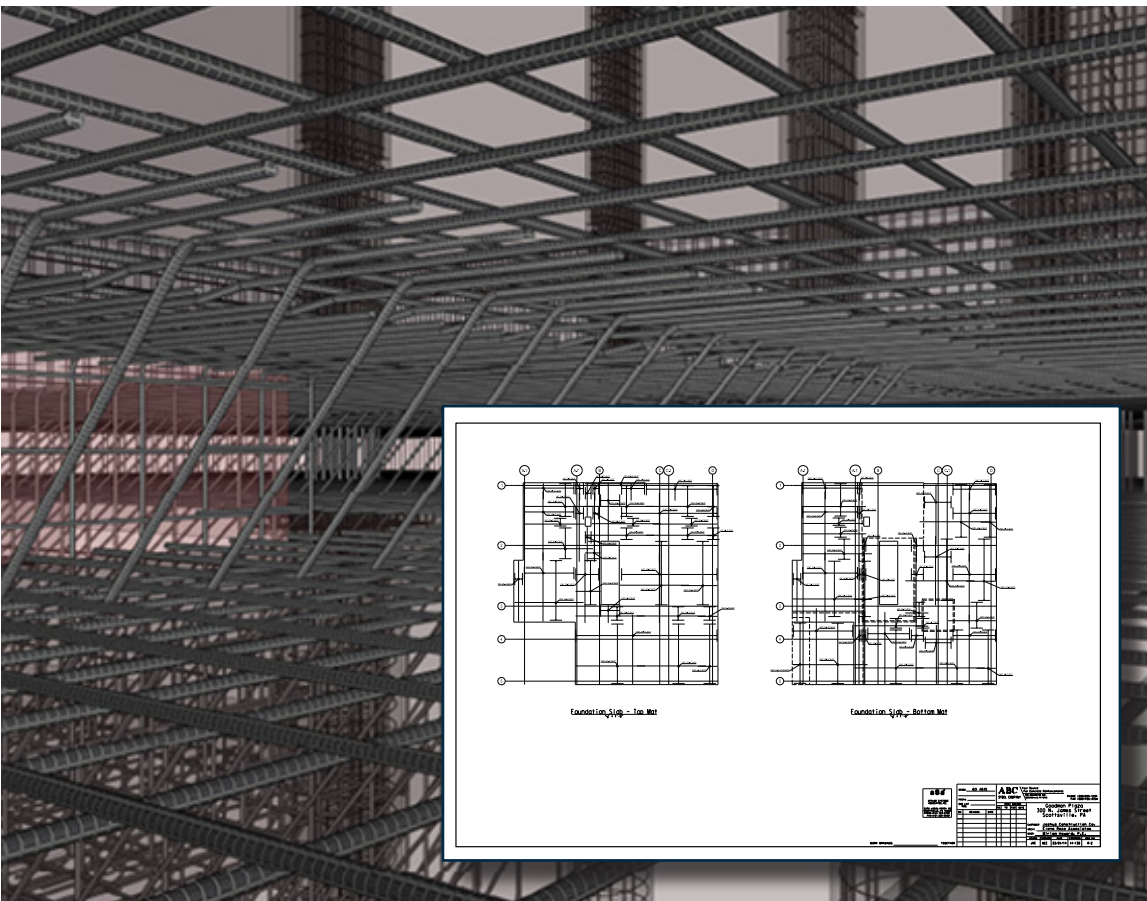
Generate multiple placing drawings and schedules from a single model

From your 3D model, ProRebar automatically generates 2D placing drawings and schedules based on customizable options you set.



Collaborate with engineers and others

Quickly share the structural model, drawings, and information with the entire team for review. Exchange model data with other 3D tools, including Revit, STAAD, and RAM.



Even if your projects don't *require* BIM, you can still benefit from the advantages of 3D modeling:

- see concrete and rebar relative to other disciplines, including HVAC, structural steel, and masonry.
- collaborate effectively with other stakeholders.
- detect and fix clashes and design issues before they become expensive problems at the jobsite.

Easily generate 2D placing drawings from your 3D model. Changes to the model automatically update the associated 2D drawings.



aSa.Studio

cloud software suite

About aSa

aSa is a world-leading provider of software for reinforcing steel, construction, and precast industries. We have been developing innovative solutions and providing personal service to our customers since our very first product was developed in 1969.

Contact Us



1.800.225.5272
+1.724.733.8700



5270 Logan Ferry Road
Murrysville, PA USA



info@asaHQ.com



asaHQ.com



Visit asaHQ.com/Contact-Us
to view all of our worldwide locations



Design. Fabricate. Build.